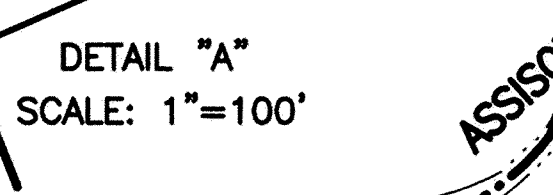
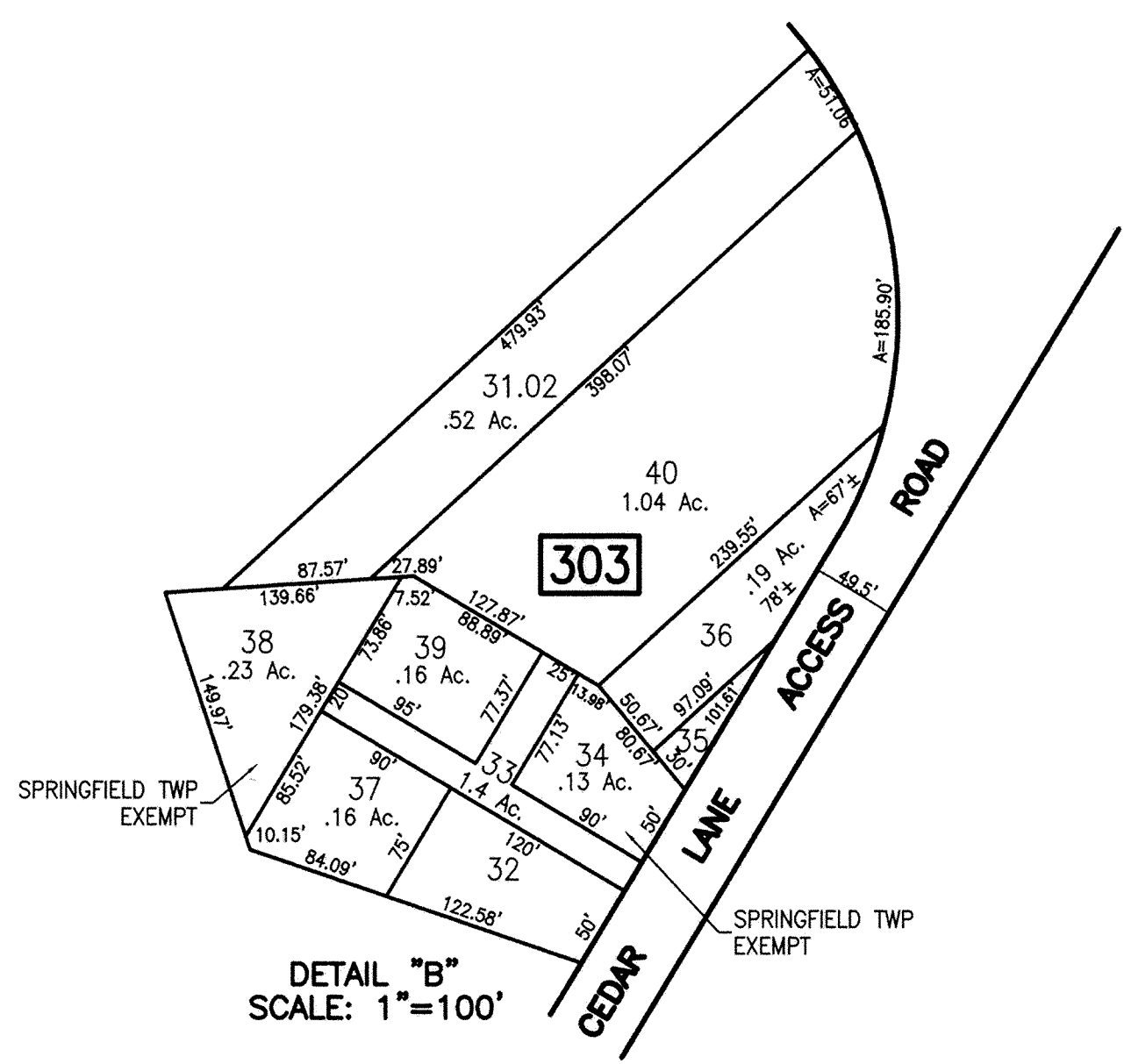
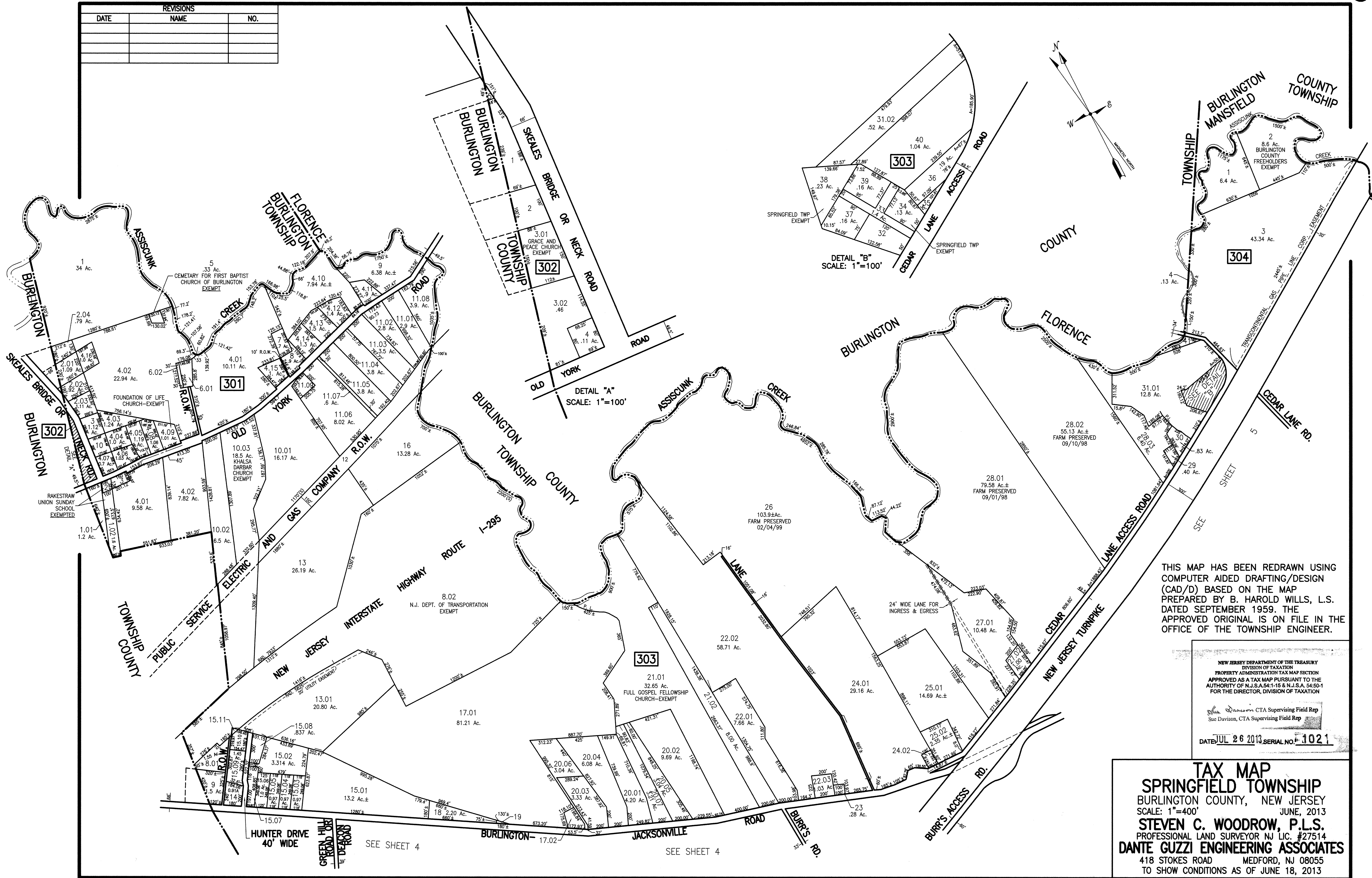


REVISIONS		
DATE	NAME	NO.



THIS MAP HAS BEEN REDRAWN USING COMPUTER AIDED DRAFTING/DESIGN (CAD/D) BASED ON THE MAP PREPARED BY B. HAROLD WILLS, L.S. DATED SEPTEMBER 1959. THE APPROVED ORIGINAL IS ON FILE IN THE OFFICE OF THE TOWNSHIP ENGINEER.

NEW JERSEY DEPARTMENT OF THE TREASURY
DIVISION OF TAXATION
PROPERTY ADMINISTRATION TAX MAP SECTION
APPROVED AS A TAX MAP PURSUANT TO THE AUTHORITY OF N.J.S.A. 54:1-15 & N.J.S.A. 54:50-1 FOR THE DIRECTOR, DIVISION OF TAXATION

Sue Davison, CTA Supervising Field Rep
Sue Davison, CTA Supervising Field Rep

DATE JUL 26 2013 SERIAL NO. 1021

TAX MAP
SPRINGFIELD TOWNSHIP
BURLINGTON COUNTY, NEW JERSEY
SCALE: 1"=400'
JUNE, 2013
STEVEN C. WOODROW, P.L.S.
PROFESSIONAL LAND SURVEYOR NJ LIC. #27514
DANTE GUZZI ENGINEERING ASSOCIATES
418 STOKES ROAD MEDFORD, NJ 08055
TO SHOW CONDITIONS AS OF JUNE 18, 2013